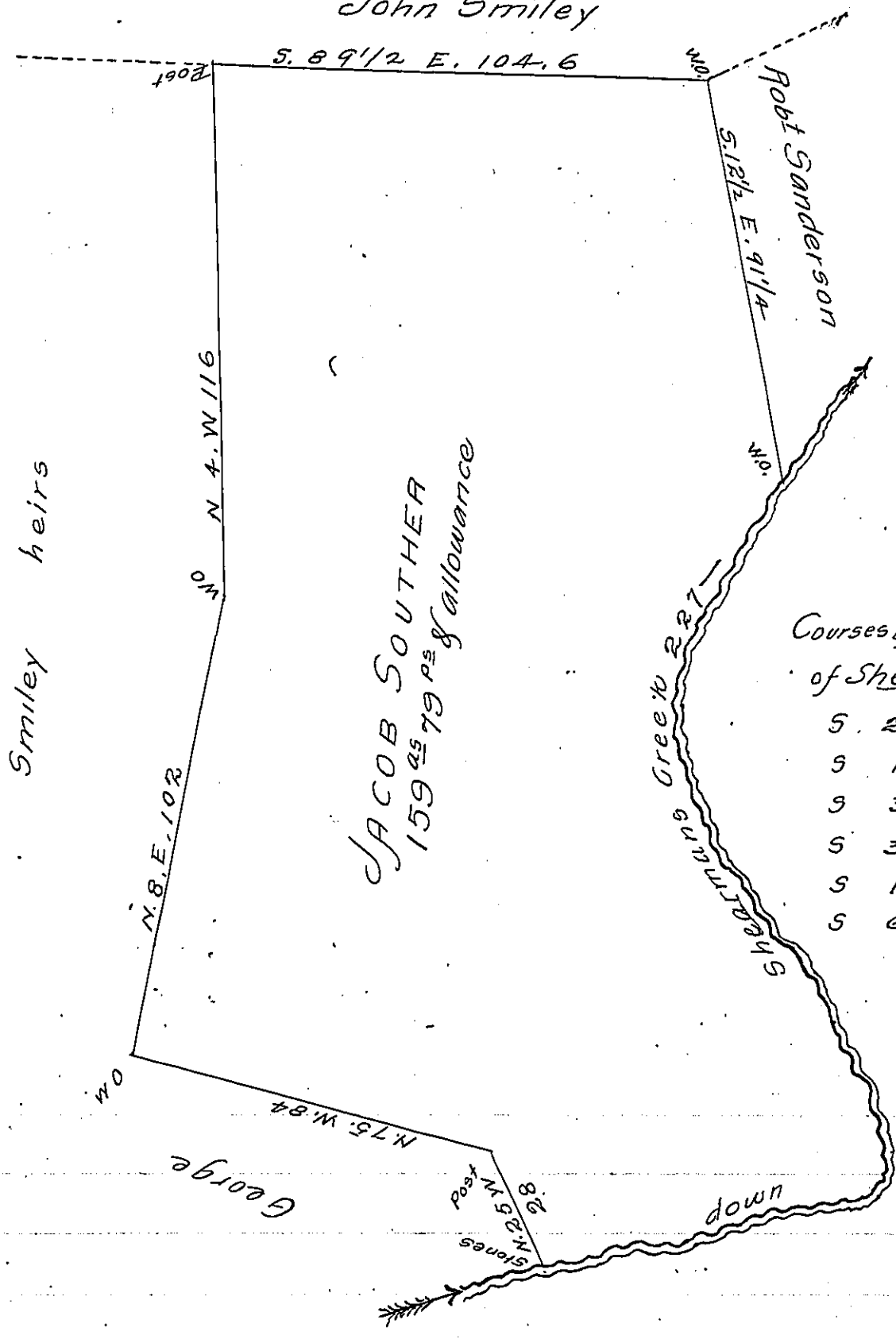


FORM NO. 1.

John Smiley



Courses & Distances of Shearmans Creek

S	29	W	46
S	10	E	34
S	33	E	26
S	36	E	20
S	15	E	39
S	67	W	62

227<sup>ps</sup>

The Draft of a tract of land situate in Aye township Cumberland County containing One hundred fifty nine acres 79 perches & allowance. Surveyed in pursuance of a Warrent dated the 15<sup>th</sup> of March 1813 granted to Jacob Souther Resurveyed Dec<sup>r</sup> 16<sup>th</sup> 1814

Rob<sup>t</sup> Clark D.S.

To Rich<sup>d</sup> T Leech Esquire  
 Surveyor General of Pennsylvania

IN TESTIMONY that the above is a copy of the original remaining on file in the Department of Internal Affairs of Pennsylvania, made conformably to an Act of Assembly approved the 16th day of February 1833, I have hereunto set my hand and caused the Seal of said Department to be affixed at Harrisburg, this first day of February 1907

*Loose P. Brown*  
 Secretary of Internal Affairs.